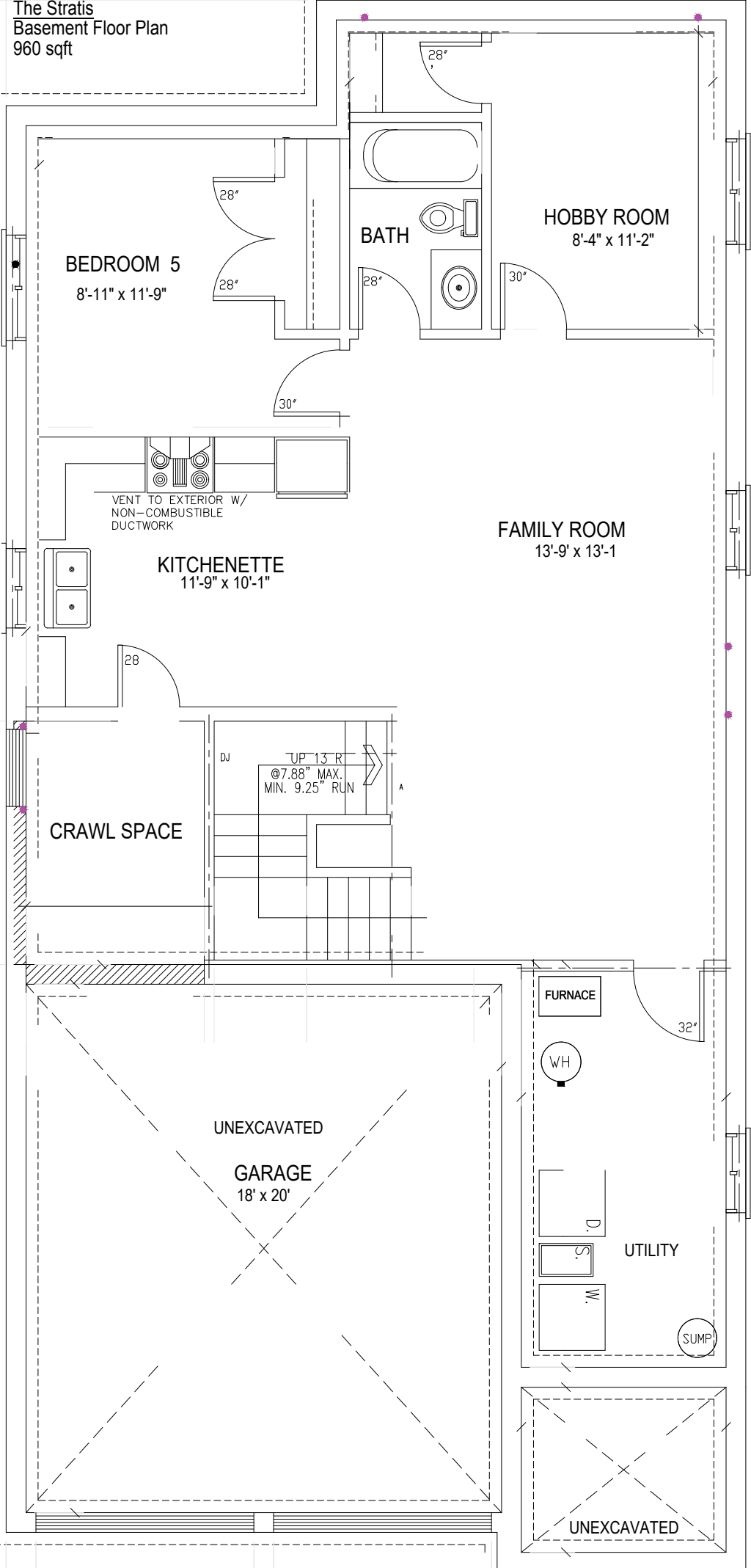


The Stratis  
Basement Floor Plan  
960 sqft



**BEDROOM 5**  
8'-11" x 11'-9"

**BATH**

**HOBBY ROOM**  
8'-4" x 11'-2"

VENT TO EXTERIOR W/  
NON-COMBUSTIBLE  
DUCTWORK

**KITCHENETTE**  
11'-9" x 10'-1"

**FAMILY ROOM**  
13'-9" x 13'-1"

**CRAWL SPACE**

UP 13' R  
@ 7.88" MAX.  
MIN. 9.25" RUN

**UNEXCAVATED GARAGE**  
18' x 20'

**FURNACE**

**WH**

**D.**

**S.**

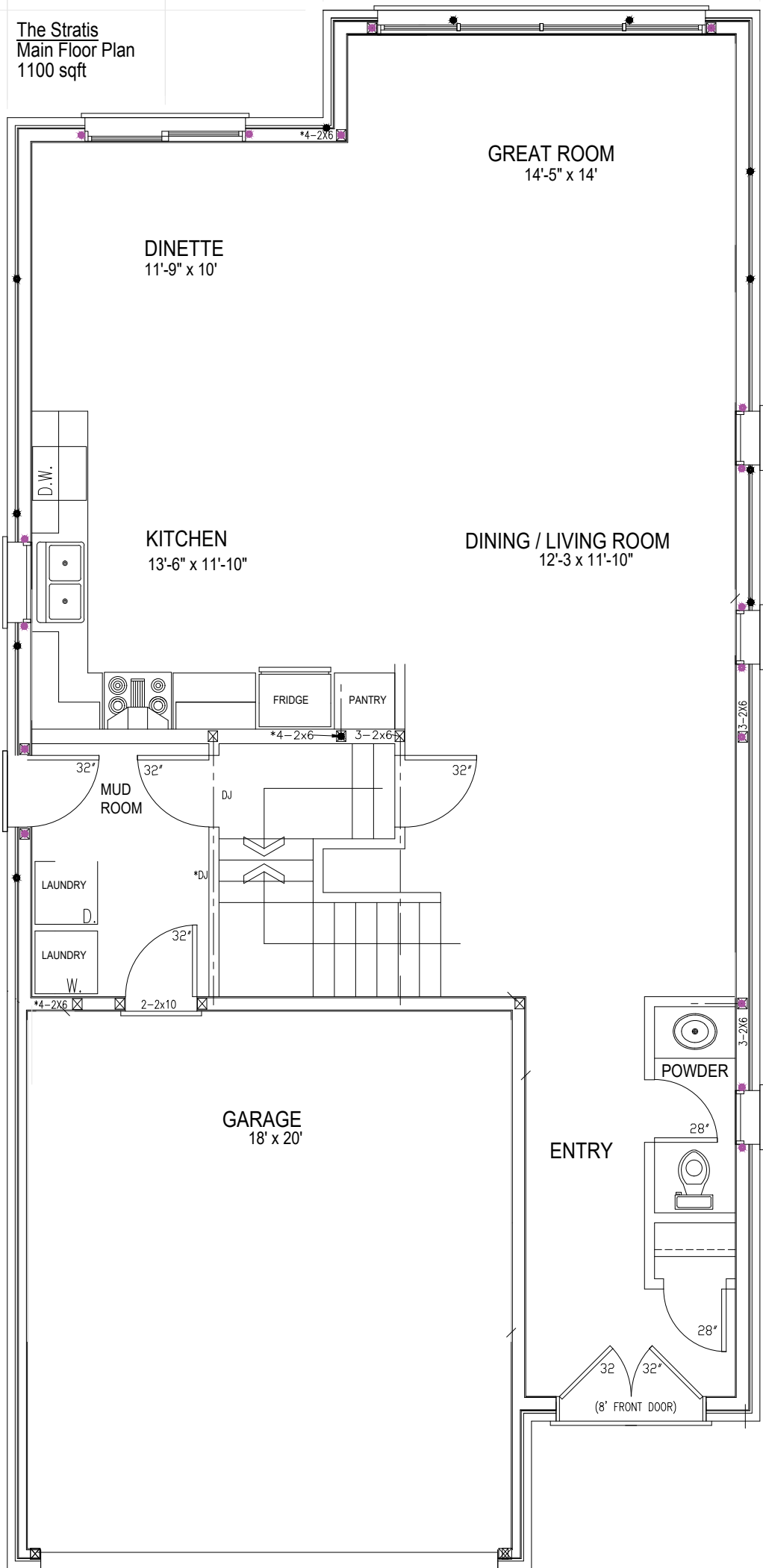
**W.**

**UTILITY**

**SUMP**

**UNEXCAVATED**

The Stratis  
Main Floor Plan  
1100 sqft



The Stratis  
Second Floor Plan  
1542 sqft

