

SITTING ROOM
19'4"x15'11"

THEATRE ROOM
19'5"x17'8"

BATH
9'10"x6'10"

MECH.
11'x6'10"

BedRm.
15'2"x12'5"

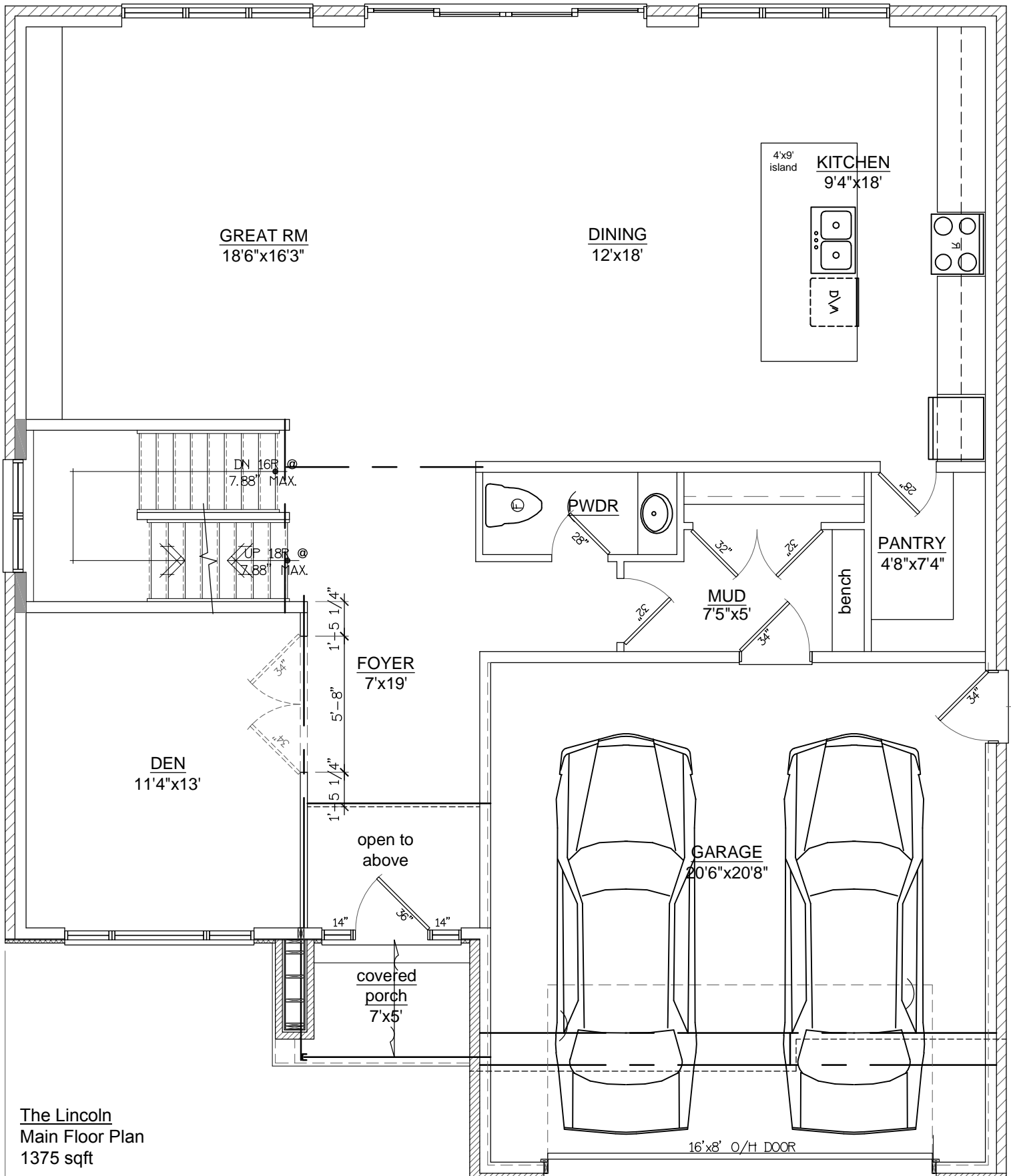
SUMP

UP 18R @
7.88" MAX.

FURNACE

HRV

H.V.T.



The Lincoln
Main Floor Plan
1375 sqft

BEDROOM 3
14'10"x14'5"

**MASTER
BEDROOM**
17'8"x14'

WIC
7'3"x14'

BATH
11'2"x6'3"

ENSUITE
11'x14'1"

LAUNDRY
11'2"x7'5"

LOFT
21'2"x14'9"

BEDROOM 2
11'8"x10'10"

open to below

12'4"x1'4"

DN 1BR @
7.88" MAX.

