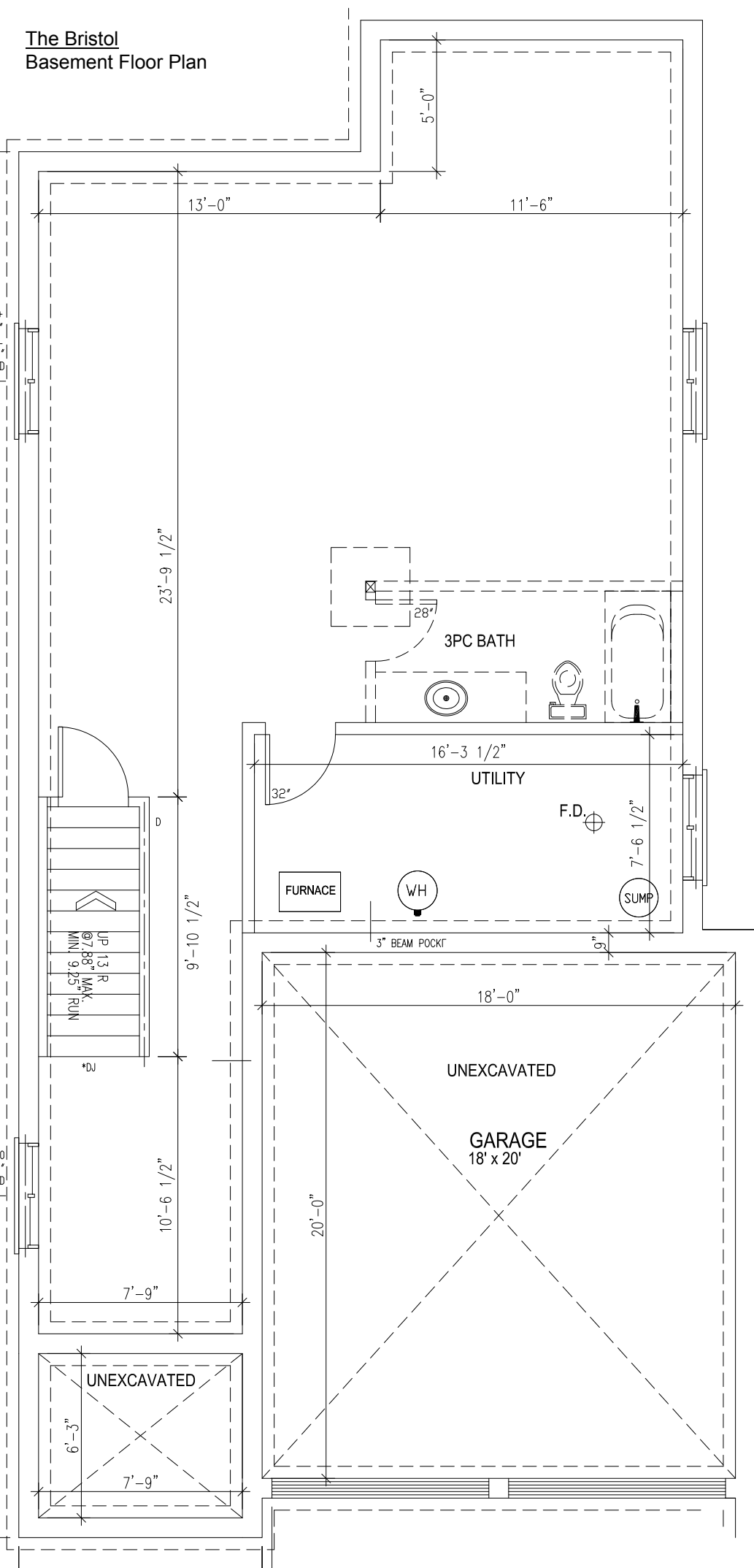
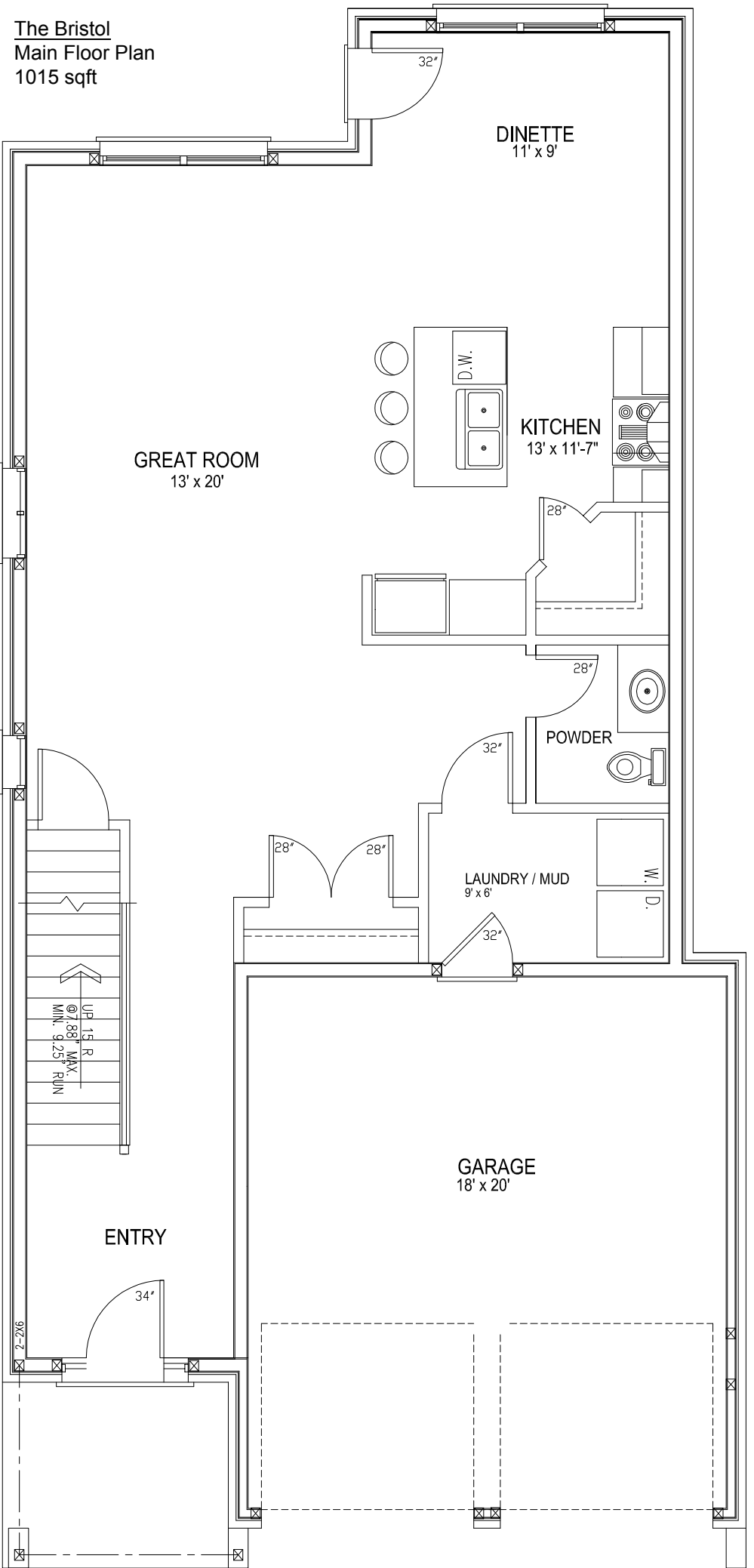


The Bristol Basement Floor Plan



The Bristol
Main Floor Plan
1015 sqft



DINETTE
11' x 9'

GREAT ROOM
13' x 20'

KITCHEN
13' x 11'-7"

POWDER

LAUNDRY / MUD
9' x 6'

GARAGE
18' x 20'

ENTRY

UP 15' R
@ 7.88" MAX.
MIN. 9.25' RUN

2-266

32"

28"

28"

32"

28"

28"

32"

34"

The Bristol
Second Floor Plan
992 sqft

